



Deep Clean

Multipurpose Deep Penetrating Cleaner



About Evercrete® Deep Clean

Evercrete® Deep Clean Heavy Duty Degreaser is a non-toxic, fortified, concrete and multipurpose cleaner that is designed to clean and “etch” the surface simultaneously. Oils, dirt, efflorescence and grime are removed. The primary use is to remove deeply penetrated oil stains and contaminated surface residue.

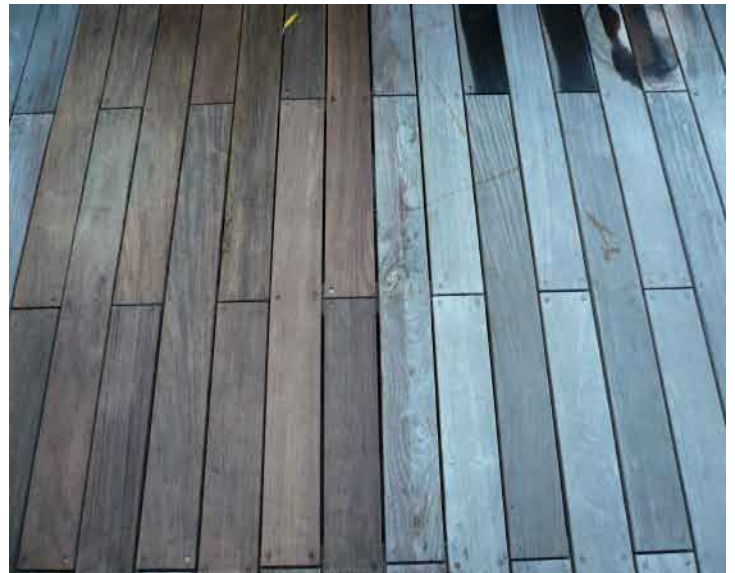
Evercrete® Deep Clean may be used full strength as an environmental alternative to muriatic and other acids for surface preparation and basic cleaning. Architectural features are enhanced by removing the gradual build-up of atmospheric grime.

Advantages of using Evercrete® Deep Clean

- Evercrete® Deep Clean is water based and non-toxic.
- Biodegradable.
- No streak rinse.
- Will Penetrate Diesel smoke on trailers.
- High alkalinity for tough soils and grease.
- USDA approved.
- Easy shipping and handling.

Where can it be used?

Evercrete® Deep Clean has a variety of recommended uses. Concrete and stone surfaces rapidly collect dirt, oil and grease in addition to efflorescence that exudes from the surface under certain conditions. As the concrete ages and carbonates that alkalinity of the surface becomes lower leading to the growth of mould and algae. The concrete and stone can easily be cleaned of all contaminants using Deep Clean. Evercrete® Deep Clean can also fill up the alkaline of the aged concrete which Evercrete® DPS have better performance.



Recommended Uses for:

- All concrete or stone structures.
- Industrial and Tile Floors.
- Gas and Petrol Station.
- Commercial Kitchens and Food Services Agencies.
- Highway and Driveway.
- Swimming Pool and Pool Decks.
- Mobile Washers and Auto Repair Shops.
- Car Park

"Concrete Solutions That Stand The Test Of Time"

Application

- For full strength, DO NOT dilute product or pre-wet surface.
- Prior to cleaning the entire surface, apply Deep Clean to heavily saturated or hard to clean areas.
- Use a stiff broom or scrubbing machinery and lightly agitate or scrub the surface.
- Apply as needed and allow Deep Clean to remain on the surface for approximately thirty (30) minutes.
- Rinse with clean high-pressure water.
- Repeat as needed.



Limitations:

- Evercrete® Deep Clean should not be applied if the surface temperature is below freezing.
- Users should refer to the MSDS of Deep Clean prior to application on any surface.

Technical Data

Form:	Clear Red Liquid
Flash point:	Non-flammable
Specific gravity:	1.05
Odor:	Slight Solvent Odor
Solubility in water:	Complete
Toxicity:	Non-toxic
Diluent:	Can Diluted with Water

Packing

5 US gallons / pail
(18.925 Litres)



For more information on Evercrete® products please visit our website at:

www.evercrete.com

Product of the USA.
Evercrete Corporation
Miami Center
201 South Biscayne Blvd, Floor 28
Miami FL 33131-4325
USA
Tel: 305 538-8321
Fax: 305 538-8739

For distributors visit:
www.evercrete.com • info@evercrete.com

Evercrete 